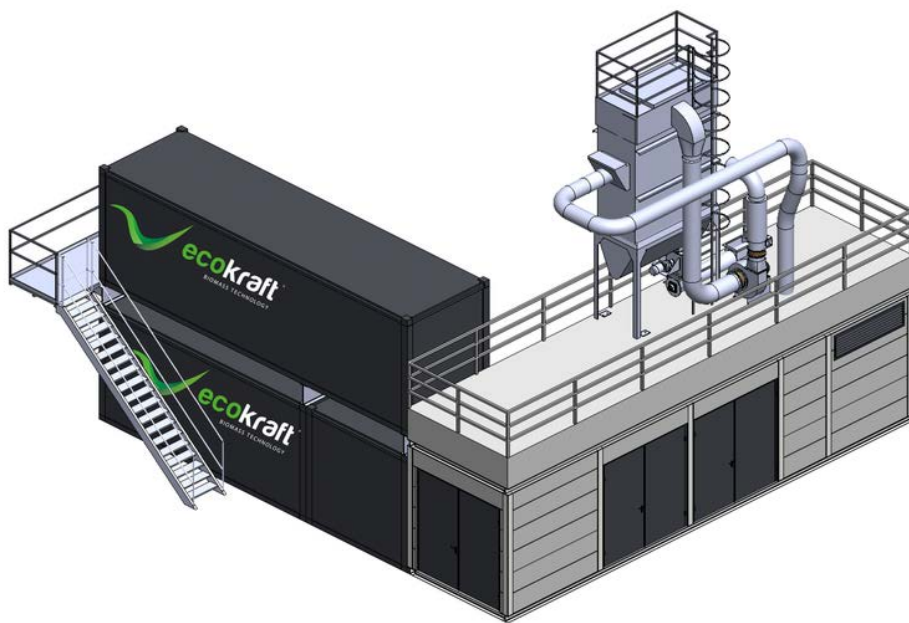


# ECOKRAFT PELLET FACTORY MOBILE EPF-M

## THE MOBILE PELLET FACTORY



### AREAS OF APPLICATION

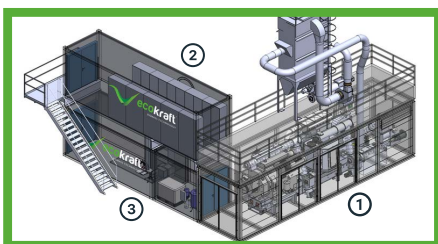
The ECOKRAFT Pellet Factory EPF-M is an extremely compact, safe and mobile pellet factory in flexible container design with little space requirement and high performance. The modular plant is suitable for the automated processing of biomasses of all kinds into premium pellets with a production volume of 1t to 4t per hour, depending on the material and plant configuration. It is equipped with grinding with filter, conditioning with water or steam addition, starch dosing, pelleting press, cooling and screening. Large gates allow unrestricted access for operation and maintenance.

### ADVANTAGES

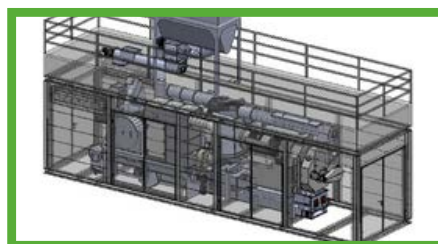
- ✓ High productivity in the smallest space
- ✓ No consideration of structural conditions necessary
- ✓ Simplified approval procedure
- ✓ Production relocation possible very quickly
- ✓ Cold and warm test before delivery possible
- ✓ More favorable insurance conditions, fire load for buildings and/or plants is reduced

### ECOKRAFT PELLET FACTORY MOBILE EPF-M

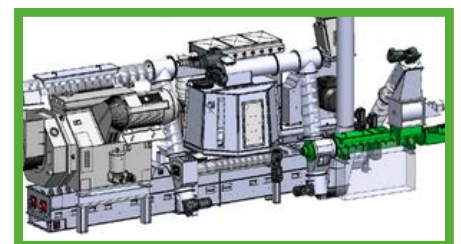
In the first step, the starting material is finely ground with immediate moisture measurement to optimize the moisture (water or steam) and, if necessary, binder addition. The material then has time to absorb the additional moisture in the resting tank. Subsequent pelletizing in the high-performance material press ensures optimum pellet quality and quantity. State-of-the-art fire and explosion protection measures guarantee safe production processes. The cooled pellets are discharged via conveyor systems. Further storage or immediate bagging is possible without any problems. The electrical equipment is housed in a separate container that can be positioned at the side or above the plant. The EPF-M can be combined with a wide range of upstream and downstream equipment, such as wet grinding, drying, bagging or truck loading.



The entire ECOKRAFT Pellet Factory is installed in three mobile and weatherproof containers:  
1. pelletizing unit, 2. control cabinets & 3. control room.



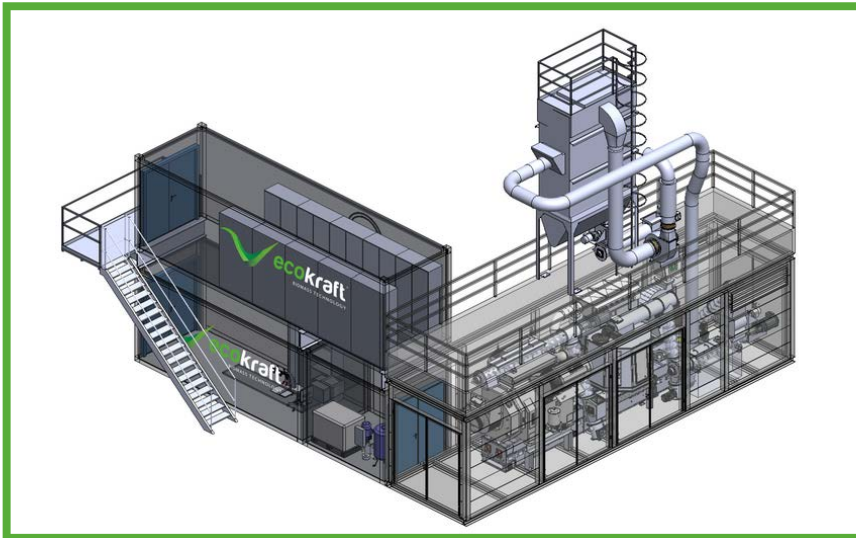
The mobile containerized production area is made of a solid steel structure with an insulated and air-conditioned production area.



The EPF-M is a self-contained pelletizing line in which the material is first crushed, moistened, pelletized, and then screened and cooled.



## SPECIFICATIONS



TYPE	EPF-M 1.0	EPF-M 2.0	EPF-M 3.0
<b>Power press</b>	2 x 45 kW	2 x 110 kW	2 x 160 kW
<b>Connected load</b>	400 V, 3 phases with 360 A fuse protection	400 V, 3 phases with 1,000 A fuse protection	400 V, 3 phases with 1,800 A fuse protection
<b>Engine power</b>	180 kW/h	310 kW/h	410 kW/h
<b>Weight</b>	approx. 26t	approx. 28t	approx. 29t
<b>Output per hr. (softwood)</b>	approx. 1.0 - 1.2t	approx. 2.0 - 3.0t	approx. 4.0 - 5.0t
<b>Output per hr. (straw &amp; hay)</b>	approx. 0.5 - 0.6t	approx. 1.0 - 2.0t	approx. 3.0 - 4.0t
<b>Length</b>	12,000 mm	12,000 mm	12,000 mm
<b>Width</b>	9,000 mm	9,000 mm	9,000 mm
<b>Height</b>	3,800 mm plus silo and filter system	3,800 mm plus silo and filter system	3,800 mm plus silo and filter system

Product illustrations similar; Changes possible at any time; All information without guarantee; Acceptance by ECOKRAFT AG applies; Status: 06/2022

