

ECOKRAFT PELLET MILL EP30

EXTREMELY ROBUST, INTELLIGENT & ENERGY-EFFICIENT



AREAS OF APPLICATION

The pellet press EP30 combines power, dynamics, and intelligence to achieve a new level of modular pellet production in industrial and/or agricultural settings. In addition to state-of-the-art controls, the EP30 features a powerful 30 kW electric motor, enabling the processing of potentially very hard materials into premium pellets.

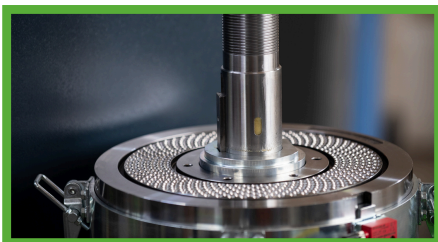
Integrated central lubrication, a water pump, and temperature monitoring ensure maximum user-friendliness and safety. The pellet press is recommended for use in single and double shift operations.

ADVANTAGES

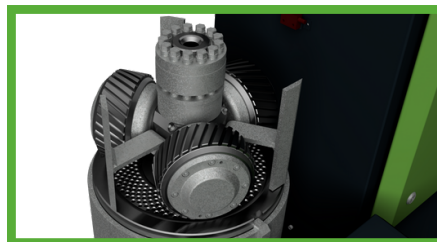
- ✓ Robust construction
- ✓ High productivity
- ✓ Enormous energy efficiency
- ✓ Integrated screening system
- ✓ Variable pellet discharge

ECOKRAFT PELLET MILL EP30

The ECOKRAFT EP30 sets new standards in efficient pelletizing technology, boasting high productivity, enormous energy efficiency, and state-of-the-art control technology. Thanks to its user-friendly plug & play system, additional Ecokraft machines can be seamlessly integrated. The EP30 also features an integrated screening system, variable pellet discharge, and remote monitoring capability. Quick die change allows for easy transition between different materials.



The heart of pelletization consists of specially hardened flat dies in various pellet diameters and die lengths.



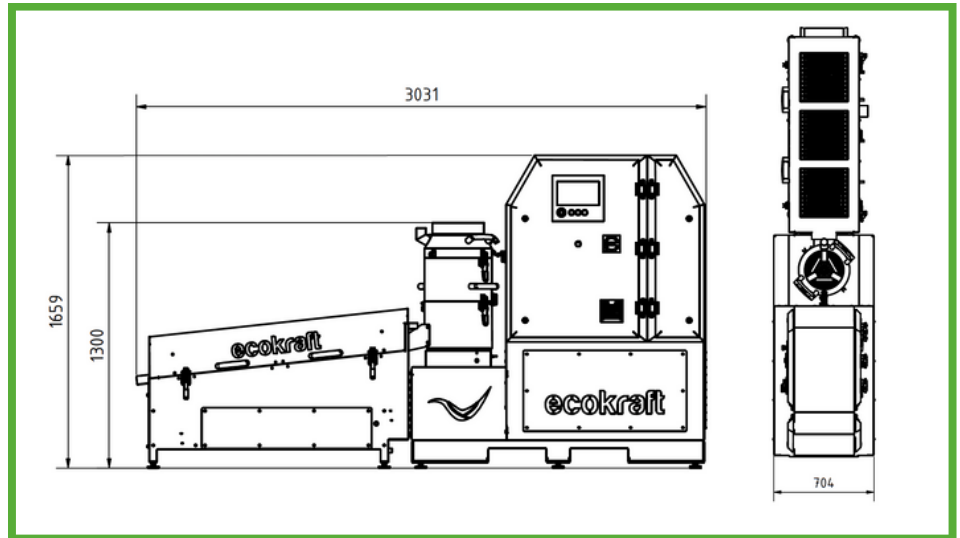
The press room-optimized roller system ensures maximum smoothness and high productivity.



The integrated screening system ensures the highest pellet quality. Any pellet breakage and fines, if they occur, are separated from the pellets and reintroduced into production.



SPECIFICATIONS



TYPE

EP30 + RS30

Power consumption (EP30 + RS30)	approx. 31 kW/h
Power consumption (EP30 + RS30 + MB + DS100 + KFB)	approx. 38 kW/h
Connected load	80 A
Supply voltage	400 V AC 3-phase, N, PE
Mains frequency	50 Hz
Control voltage	24 V DC
Weight (EP30 + RS30)	approx. 1,350 kg

Dimensions of I-shape (L x W x H) approx. 3,031 x 704 x 1,659 mm

Dimensions of L-shape (L x W x H) approx. 2,000 x 1,575 x 1,659 mm

