

ECOKRAFT PELLET PRESS EP30

EXTREMELY ROBUST, INTELLIGENT & ENERGY-EFFICIENT



AREAS OF APPLICATION

The EP30 pellet press combines strength, dynamism, and intelligence to elevate modular pellet production to a new level in both industrial and agricultural applications.

Equipped with state-of-the-art controls and a powerful 30 kW electric motor, the EP30 can process even extremely hard materials into premium pellets. Its integrated central lubrication, water pump, and temperature monitoring ensure maximum user-friendliness and safety.

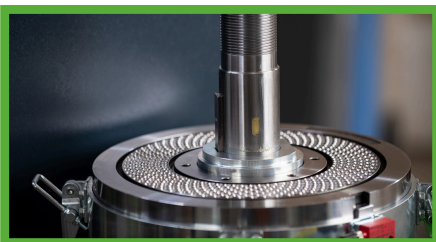
The pellet press is recommended for use in single- and double-shift operations.

ADVANTAGES

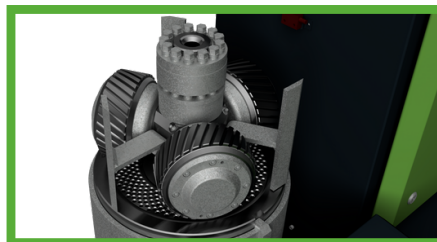
- ✓ Robust construction
- ✓ High productivity
- ✓ Enormous energy efficiency
- ✓ Integrated screening system
- ✓ Variable pellet discharge

ECOKRAFT PELLET PRESS EP30

The ECOKRAFT EP30 sets new standards in efficient pelletizing technology, standing out with high productivity, enormous energy efficiency, and cutting-edge control technology. Thanks to its user-friendly plug-and-play system, additional Ecokraft machines can be seamlessly integrated. The EP30 also features an integrated screening system, variable pellet discharge, and remote monitoring capability. Its quick die-change system allows for easy switching between different materials.



At the heart of the pelletizing process are specially hardened flat dies available in various pellet diameters and press channel lengths.



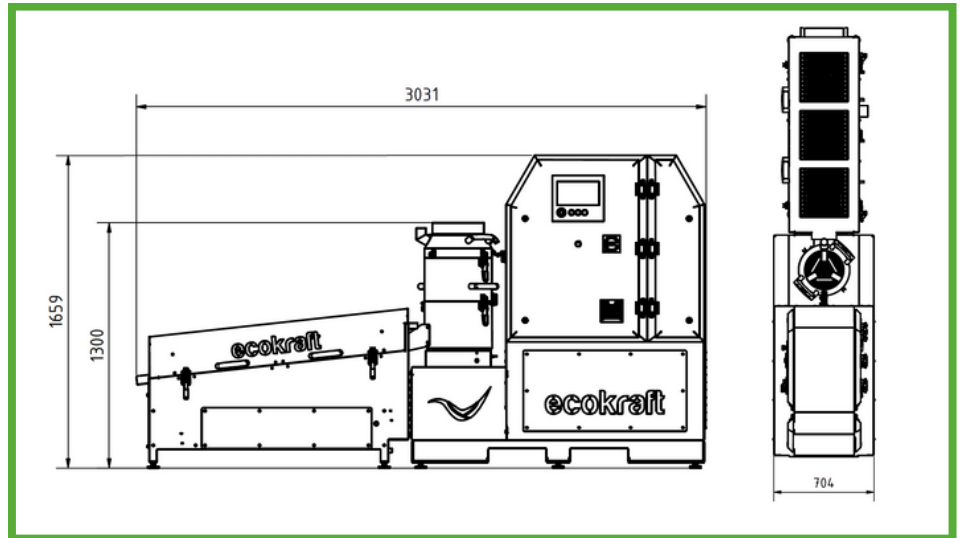
The press chamber's optimized roller system ensures maximum smoothness and high productivity.



The integrated screening system guarantees the highest pellet quality. Any pellet fragments and fine materials are separated from the pellets and fed back into the production process.



TECHNICAL SPECIFICATIONS



TYPE

EP30

Power Consumption	approx. 31 kW/h
Connection Rating	80 A
Supply Voltage	400 V AC 3-Phase, N, PE
Network Frequency	50 Hz
Control Voltage	24 V DC
Weight	approx. 1,350 kg

Dimensions I-Shape (LxWxH)	approx. 3,031 x 704 x 1,659 mm
Dimensions L-Shape (LxWxH)	approx. 2,000 x 1,575 x 1,659 mm

