

# ECOKRAFT DOSING SYSTEM DS100

## CONTROLLED ADDITION OF ADDITIVES / BINDERS



### AREAS OF APPLICATION

The ECOKRAFT dosing system DS100 enables precise addition of additives/binders to optimize material flow and pellet quality, especially for demanding materials. The amount of binder and the speed of the dosing screw can be controlled either via the display of the pellet press or, when using the standalone variant, through a manual dial.

The dosing system consists of a hopper unit with an agitator, a protective grid with a serrated crown for opening/tearing the starch bag, a dosing screw, a base frame, and an electric motor. Additionally, the DS100 features sight glasses for visual level monitoring and a level sensor that indicates a low fill level (below 30%).



### ADVANTAGES

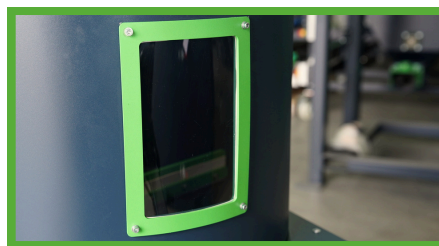
- ✓ Improved pellet quality
- ✓ Enhanced material flow
- ✓ Easy filling
- ✓ Individual dosing capability
- ✓ Mobile, compact design

### ECOKRAFT DOSING SYSTEM DS100

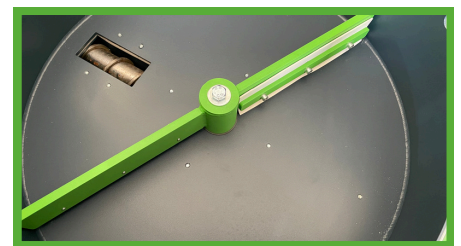
The ECOKRAFT dosing system DS100 is a solution for adding binder to the raw material, resulting in a significant improvement in pellet quality. The binder is added to the material directly as it exits the material hopper and moves towards the pellet press. Due to its compact and mobile design, the dosing system can be flexibly positioned. When integrated with the pellet press control, a warning is displayed on the screen or optionally sent via SMS if the fill level drops below a certain threshold. In the standalone variant, a flashing light is activated.



To facilitate the filling process, the protective grid with a serrated crown allows for tearing open the starch bag and filling the dosing system.



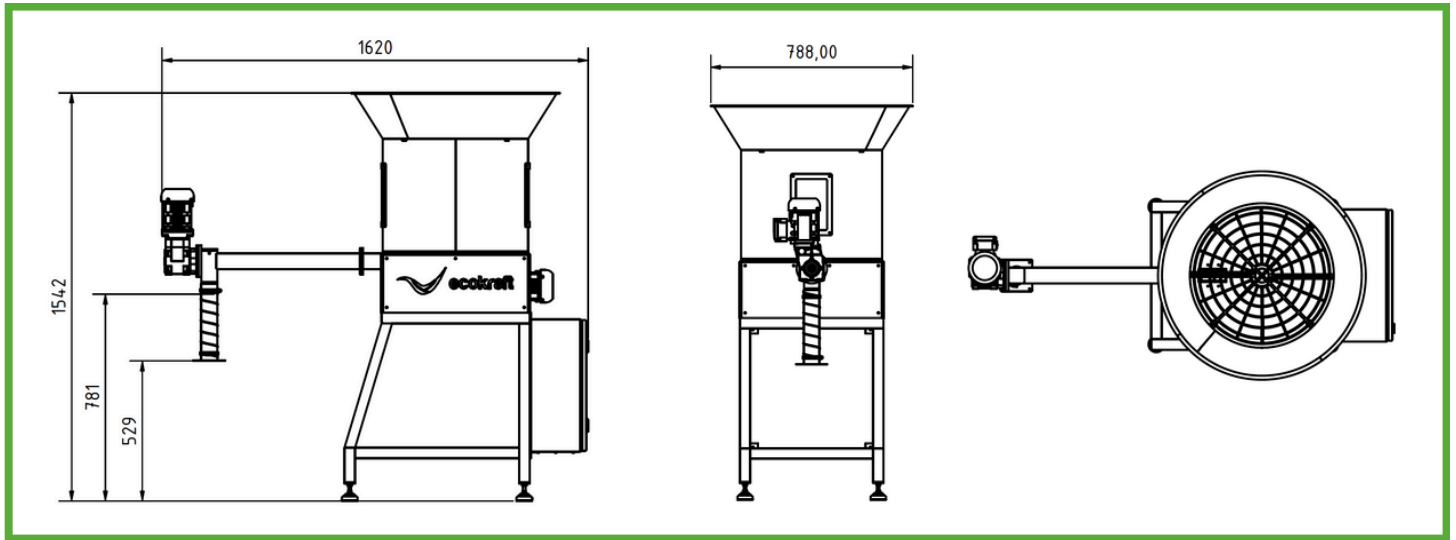
The dosing system features sight glasses on both sides for visual level monitoring. Additionally, a sensor alerts when the fill level falls below 30%.



An internal agitator prevents the formation of blockages and ensures a consistent material flow.



## SPECIFICATIONS



| TYPE                     | DS100 Standalone                                  | DS100 with LP22/EP30                              |
|--------------------------|---|---|
| <b>Power consumption</b> | approx. 1 kW/h                                    | approx. 1 kW/h                                    |
| <b>Nominal voltage</b>   | 400V  | 400V  |
| <b>Connection</b>        | 16A CEE   | Power supply via pellet press LP22 or EP30        |
| <b>Container volume</b>  | approx. 100 liters (3x starch bags of 20 kg each) | approx. 100 liters (3x starch bags of 20 kg each) |
| <b>Length</b>            | 1,620 mm  |   |
| <b>Width</b>             | 788 mm  |   |
| <b>Height</b>            | 1,542 mm  |   |
| <b>Weight</b>            | approx. 135 kg                                    |   |

Product illustrations similar; Changes possible at any time; All information without guarantee; Acceptance by ECOKRAFT AG applies; Status: 07/2024

